

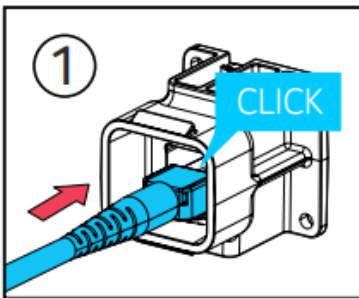


These instructions are written for qualified and experienced personnel. Please study them carefully before starting any work. Any liability or responsibility for the results of improper or unsafe installation practices is disclaimed. Please respect valid environmental regulations for assembly and waste disposal. Always make sure to use appropriate personal protection!

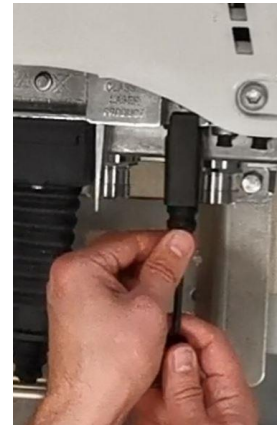
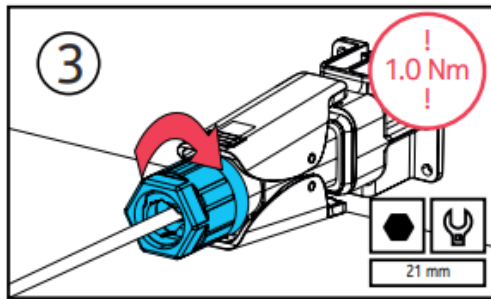
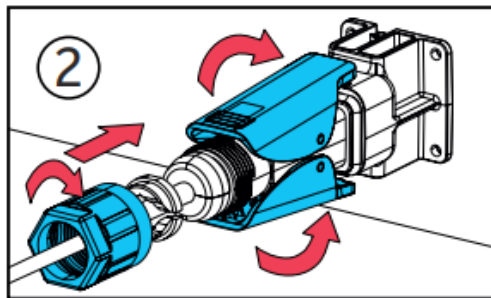
ATTENTION!

The seal nut of factory assembled AOPC housings need to be loosened and pulled back before connecting the optical connector.
For non-factory installed AOPC housings the appropriate sealing gland has been selected according to table 1.

Connecting the optical cable with AOPC housing



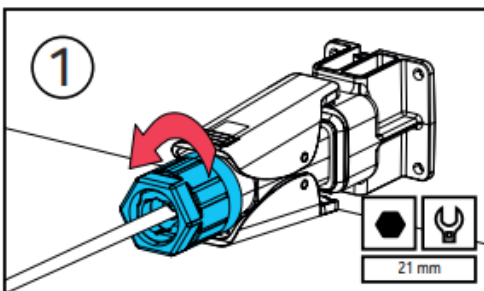
1. Insert the fiber into the required port until it clicks.
2. Insert the seal housing pushing it all the way in and pre-fasten the seal nut by hand.
3. Tighten the seal nut to 1.0 Nm (8.9 in-lb). Do not over-tighten the nut!



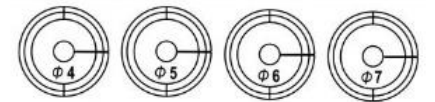
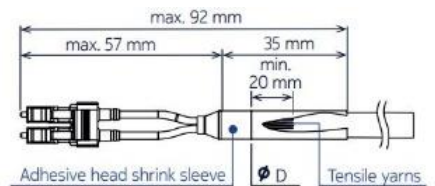
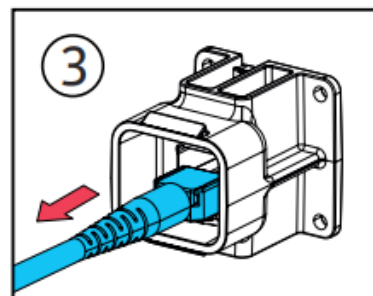
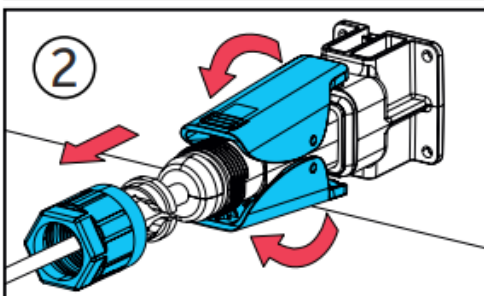
Step 2:

Keep the cable straight with a minimum of tension while installing the AOPC housing. Do not push the cable!

Disconnecting the optical cable with AOPC housing



1. Loosen the seal nut.
2. Remove the seal nut, then press the IP seal lock and pull out the SFP IP seal housing.
3. Press connector locking latch and disconnect the cable.



Gland hole size	Cable diameter
Ø 4	3.8–4.2 mm (0.15–0.17 in.)
Ø 5	4.6–5.2 mm (0.18–0.20 in.)
Ø 6	5.8–6.2 mm (0.23–0.24 in.)
Ø 7	6.8–7.2 mm (0.27–0.28 in.)

Table 1





**Fiber Jumper
AOPC Nokia**

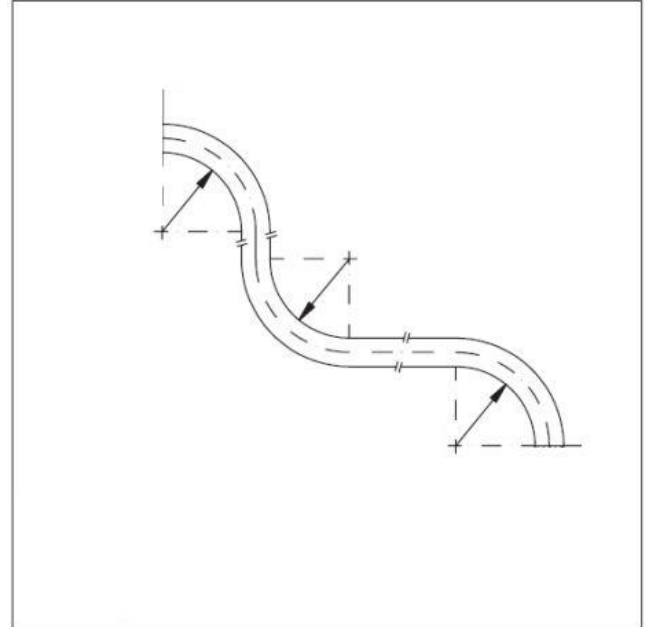
Installation Instruction

10000030751-03
Fiber Jumper
AOPC Nokia

These instructions are written for qualified and experienced personnel. Please study them carefully before starting any work. Any liability or responsibility for the results of improper or unsafe installation practices is disclaimed. Please respect valid environmental regulations for assembly and waste disposal. Always make sure to use appropriate personal protection!

Unstress the Cable during Installation

To achieve this, add at least one fixing point to isolate from pulling force and two 90° bends to isolate from torque. Please use clamps with cushion inserts rather than tie wraps and observe bending parameters as per cable specification.



Example clamps can be used

